

SUBDIVISION PLAN OF LOT 1, SEC 23,
TP 26, ODYD, PLAN EPP120337.

PLAN EPP131664

BCGS 82E.084
SCALE 1:400 METRIC



The intended plot size of this plan is 432mm in width by 560mm in height (C-size) when plotted at a scale of 1:400 METRIC.

LEGEND

- Denotes Control Monument Found
- Denotes Standard Lead Plug Found
- Denotes Standard Iron Post Found
- Denotes Standard Iron Post Set
- NF Denotes Iron Post searched and Not Found
- Wt Denotes Witness

This plan shows one or more witness posts which are not set on the true corner(s).

Distances shown are horizontal, ground-level distances, in metres and decimals thereof.

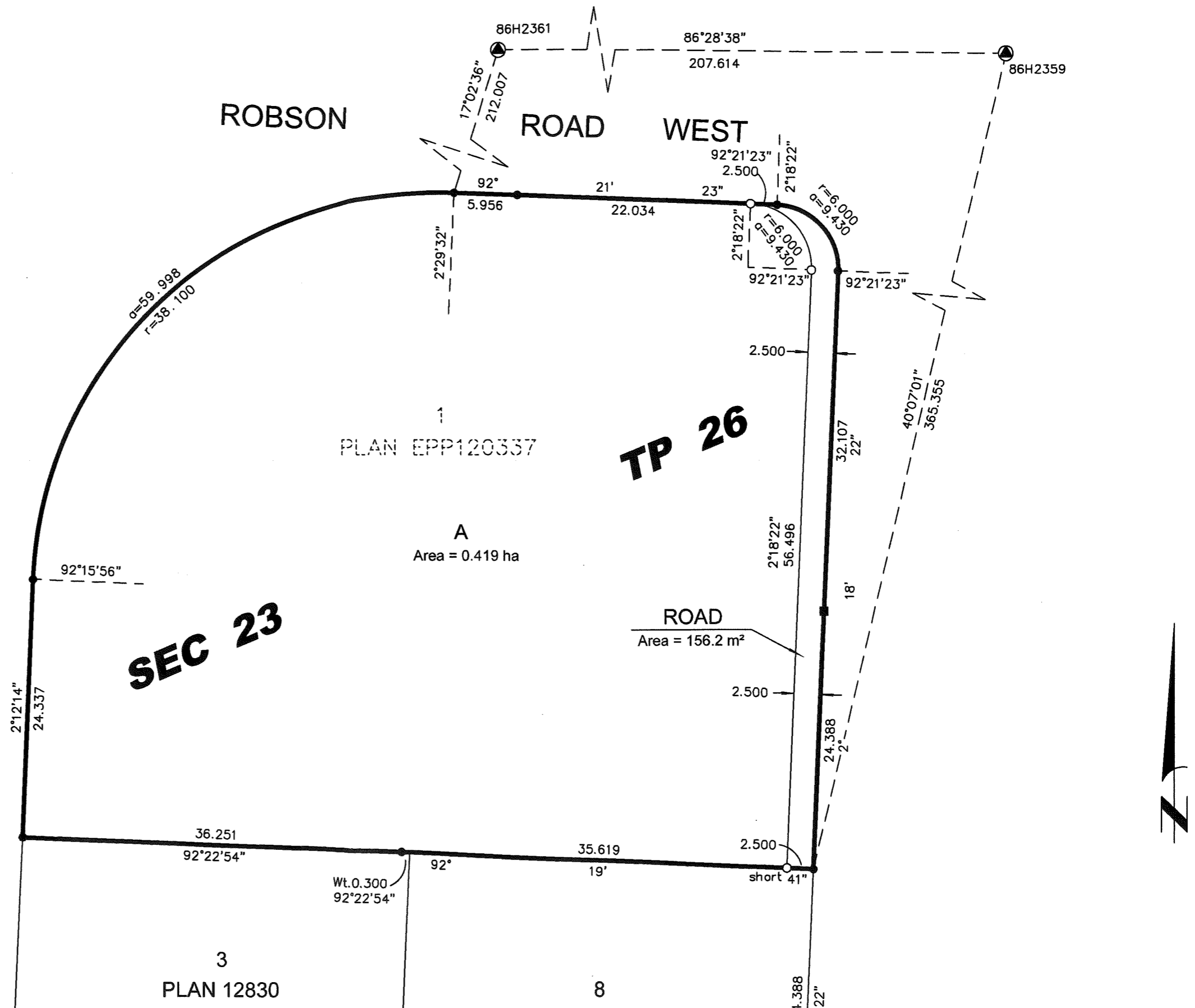
Integrated Survey Area No. 4, City of Kelowna,
NAD83(CSRS) 4.0.0.BC.1.

Grid bearings are derived from observations between geodetic control monuments 86H2361 and 86H2359 and are referred to the central meridian of UTM Zone 11.

The UTM coordinates and estimated absolute accuracy achieved are derived from the MASCOT published coordinates and standard deviations for geodetic control monuments 86H2361 and 86H2359.

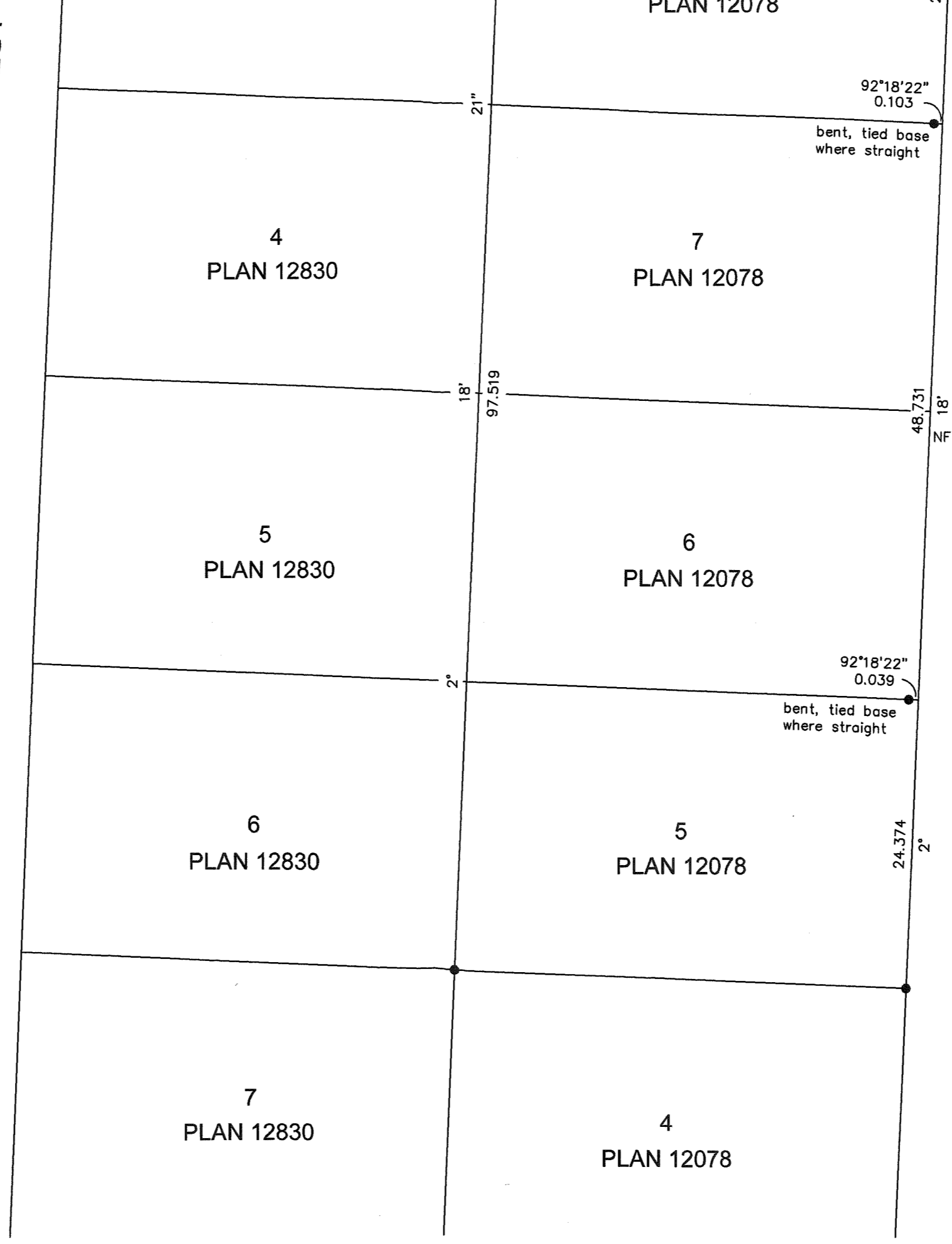
This plan shows horizontal ground-level distances unless otherwise specified. To compute grid distances, multiply ground-level distances by the average combined factor of 0.9998971 which has been derived from geodetic control monument 86H2359.

NAD83(CSRS) 4.0.0.BC.1 UTM ZONE 11 COORDINATES			
Point	Northing	Easting	Absolute Accuracy
86H2359	5529021.416	328765.938	0.02
86H2361	5529008.662	328558.737	0.02



ROBSON ROAD WEST

RUTLAND ROAD SOUTH



This plan lies within the jurisdiction of the Approving Officer for the City of Kelowna.

This plan lies within the Regional District of Central Okanagan.

The field survey represented by this plan was completed on the 24th day of August, 2023.

Rory C. O'Connell, BCLS #876